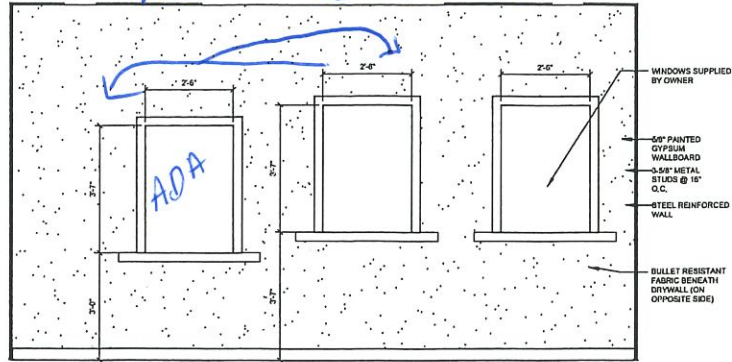


ADA window moved to center

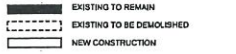


BALLISTIC WALL NOTES

WINDOW SUPPLIED BY OWNER:

BALLISTIC WALL PROTECTION:
 PERFORMANCE: 44 MAGNUM LB. 732 BULLET RESISTANT FIBERGLASS PANELS, "NON REDUCED TYPE" TO PERMIT THE ENCLOSURE AND RETENTION OF AN ATTACKING PROJECTILE.
 INSTALLATION: PLACE ON METAL STUDS. REINFORCE BEAMS WITH LINE MATERIAL. PLACE DRYWALL OVER AFTER ALL BEAMS AND JOINTS ARE SECURED.
 VENDOR: DESIGN BASIS COVENANT SECURITY EQUIPMENT PHOENIX, AZ 85034-4400
www.covenantsecurityequipment.com
www.ballisticwall.com

PHASING LEGEND



OPENING SCHEDULE

- DOORS:**
- 1, 2, 5, 6, 7' x 7' 1/2" SOLID CORE WOOD DOOR IN HOLLOW METAL FRAME, ADA COMPLIANT, MATCH EXISTING DOORS' VENEER AND FINISH.
 - 3" 3/4" x 7' 1/2" SOLID CORE WOOD DOOR IN HOLLOW METAL FRAME, ADA COMPLIANT RESTROOM LOCKSET. MATCH EXISTING DOORS' VENEER AND FINISH.
 - 10 3" x 7' 1/2" SOLID CORE WOOD DOOR IN HOLLOW METAL FRAME, ADA COMPLIANT RESTROOM LOCKSET. MATCH EXISTING DOORS' VENEER AND FINISH.
 - EXISTING DOOR AND FRAME REUSED. VERIFY HW LOCKSET IS ADA COMPLIANT. REPLACE IF NON COMPLIANT.
 - PAIR 3" x 7' 1/2" SOLID CORE WOOD DOOR IN HOLLOW METAL FRAME, ADA COMPLIANT RESTROOM LOCKSET. MATCH EXISTING DOORS' VENEER AND FINISH.

- DOOR NOTES:**
1. DOORS SHALL BE READY TO OPERATE FROM THE EXTERIOR SIDE WITHOUT THE USE OF A KEY OR SPECIAL KNOWLEDGE OR EFFORT (REFER IBC 2018 SECTION 1016.1.9)
 2. DOOR HANDLES, PULLS, LATCHES, LOCKS AND OTHER OPERATING DEVICES SHALL NOT REQUIRE TIGHT GRASPING, TIGHT PINCHING OR TWISTING OF THE WRIST TO OPERATE. (REFER IBC 2018 SECTION 1016.1.8.1)
 3. DOOR HARDWARE TO COMPLY WITH ADA. LEVER TYPE LOCKSETS, CLOSER PULL PRESSURE, ETC.
 4. COORDINATE KEYING WITH OWNER.
 5. OPENING DIMENSIONS ON FLOOR PLAN ARE AS FOLLOWS:
 DOORS: DIMENSIONS ARE OF DOOR LEAF. FRAMES ARE NOT INCLUDED IN THE DIMENSION. CONTRACTOR COORDINATE FRAME DIMENSION WITH DOOR LEAF TO DETERMINE ROUGH OPENING REQUIREMENTS.
 WINDOWS: DIMENSIONS ARE OF WINDOW'S NOMINAL SIZE. CONTRACTOR COORDINATE WINDOW DIMENSION WITH ROUGH OPENING REQUIREMENTS.
 6. MATCH EXISTING HARDWARE FINISH AND STYLE (IF EXISTING STYLE IS ADA COMPLIANT).

GENERAL NOTES:

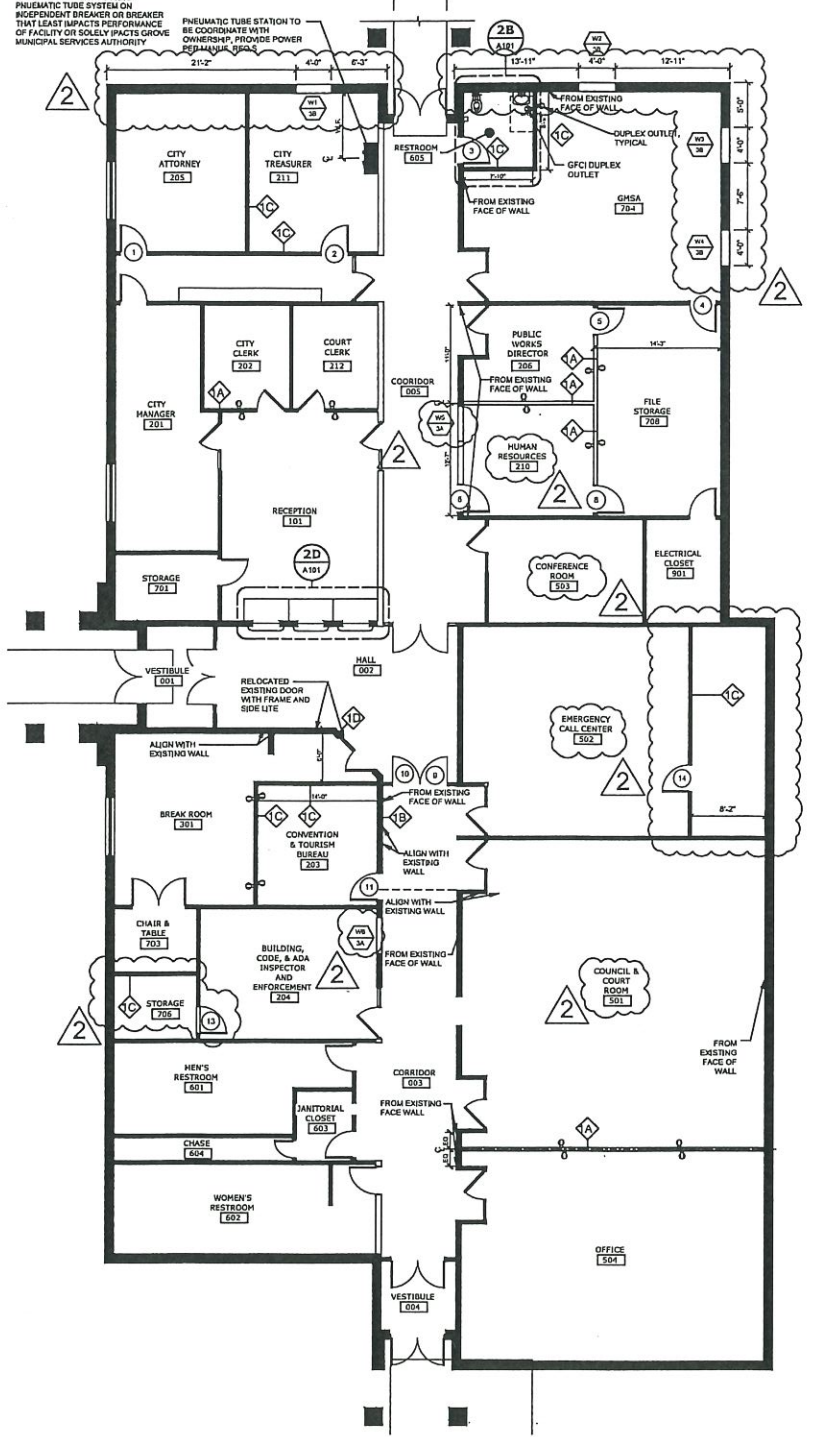
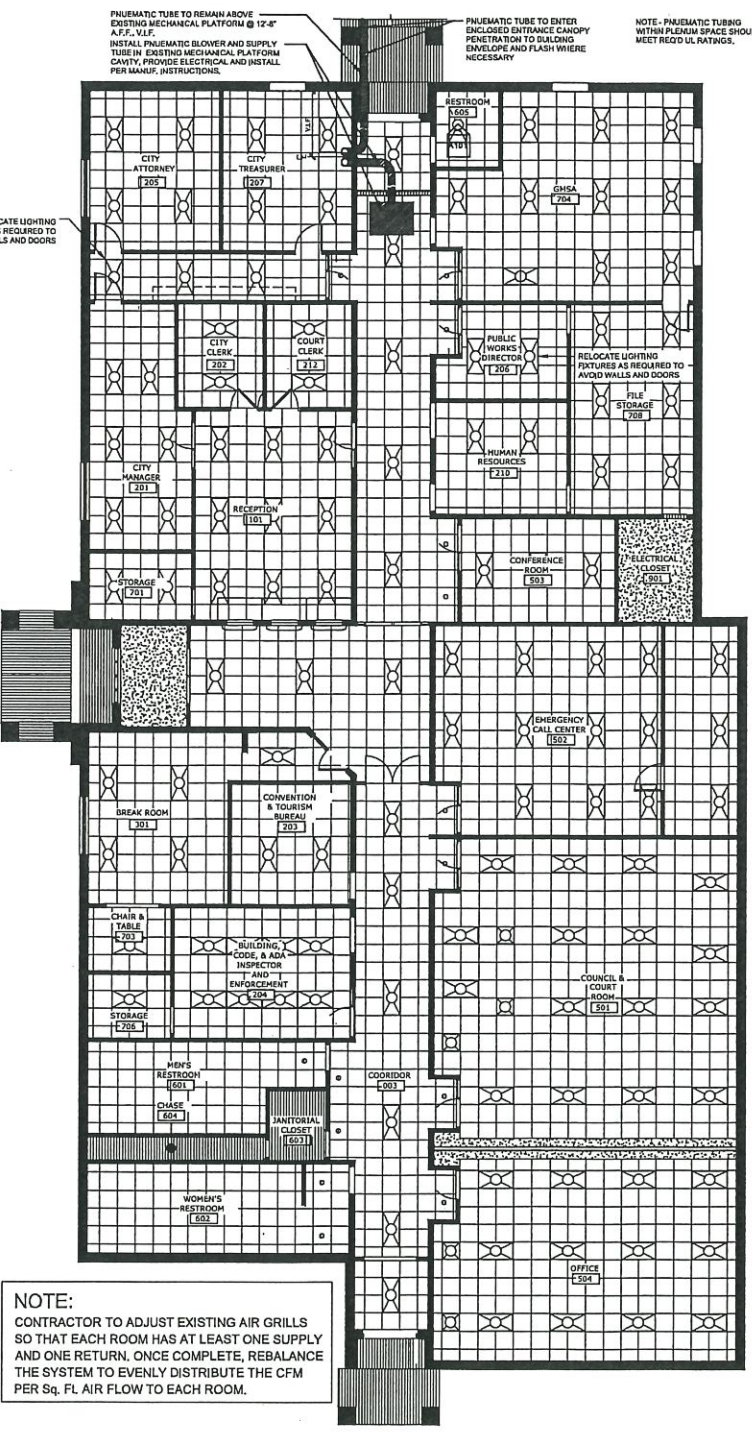
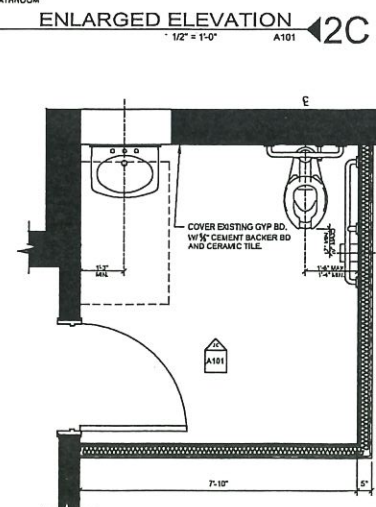
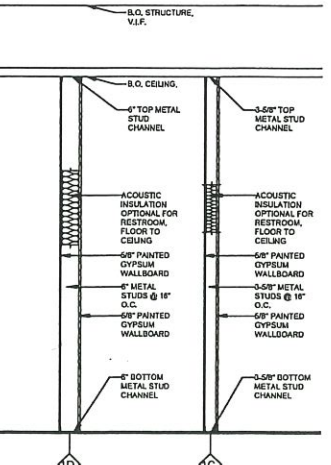
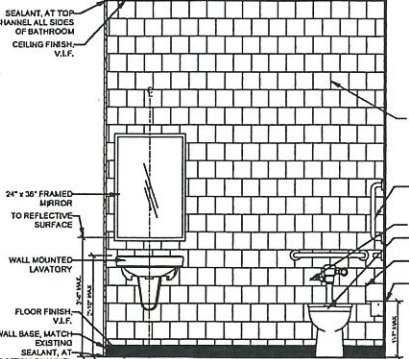
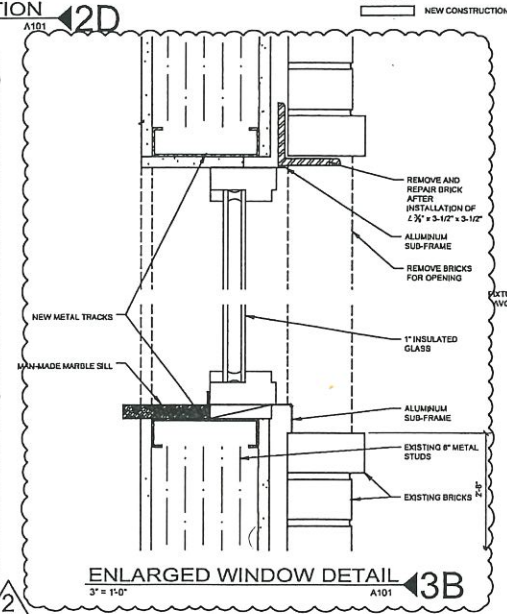
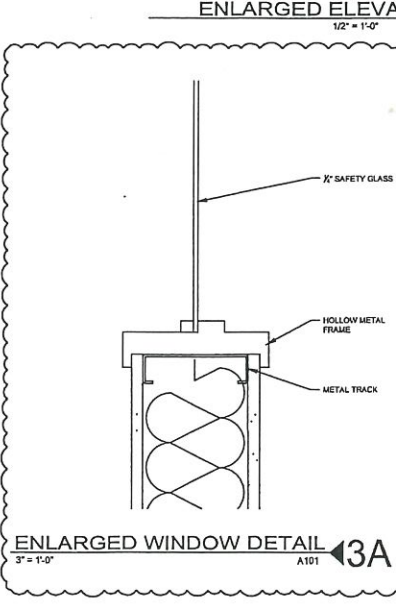
1. PROJECT IS MODIFICATION OF EXISTING INTERIOR SPACE AND ADDITION OF CANOPY OVER EXISTING WALLWAY. VERIFY CONDITIONS PRIOR TO DEMOLITION. CONTACT ARCHITECT IF EXISTING CONDITIONS CONFLICT WITH DOCUMENTS.
2. MATCH ADJACENT SURFACES WITH WALL ADDITIONS, FILL INS, EXTENSIONS, ETC. PAINT MINIMIZE TEXTURE AND COLOR DIFFERENCES.
3. PNEUMATIC TUBE SYSTEM, INCLUDING ALL EQUIPMENT AND L.A.S. TO INSTALL, IS BY OTHERS. CONTRACTOR AND SYSTEM SUPPLIER COORDINATE SYSTEM'S ELECTRICAL REQUIREMENTS AND EXISTING SURFACE DAMAGED BY SYSTEM INSTALLATION.

GENERAL NOTES-RCP

1. EXISTING TROFFER LIGHTING TO BE RELOCATED AND SPACED EVENLY AND CENTERED ON ROOM AS NEEDED.
2. DOWNRODS ARE TO FACE OF STUD LAYER UNLESS OTHERWISE INDICATED.
3. PATCH AND REPAIR ACoustic CEILING GRID SYSTEM WITH MATCHING MATERIALS AS NECESSARY.
4. PARTIAL HEIGHT WALLS TO REMAIN 24" FREE AND CLEAR FOR ADEQUATE FLOW OF AIR.
5. ACoustic INSULATION OPTIONAL OVER RESTROOMS.
6. RELOCATE EXISTING LIGHTING TO BE EQUALLY CENTERED ON NEW SPACES.
7. REPAIR AND REPLACE CEILING TILE AND GRID AS NECESSARY.

GENERAL NOTES - NEW WORK

1. OUTSIDE OF DOOR JAMB ROUGH OPENINGS TO BE 3" FROM WALL INTERSECTIONS UNLESS OTHERWISE INDICATED.
2. DIMENSIONS ARE TO FACE OF STUD LAYER UNLESS OTHERWISE INDICATED.
3. ALL WALL FINISHES ARE TO MATCH EXISTING.
4. ALL EXISTING FLOOR FINISHES ARE TO BE CONTIGUOUS UNDER NEW PARTITIONS.
5. NEW WALL FINISHES AND WALL BASES ARE TO MATCH EXISTING CONDITIONS.
6. ELECTRICAL OUTLETS TO BE CENTERED AND SPACED EQUAL ON DEREGMATED WALLS.
7. COORDINATE LIGHT CONTROLS & SWITCHES WITH OWNERSHIP.



EDMONDSON DESIGN GROUP, INC.
 8283 South Harvard, Suite 224
 Tulsa, Oklahoma 74137
 T: 918.576.8700

This document, and the ideas and designs incorporated herein, are an instrument of professional service, and the property of EDMONDSON DESIGN GROUP, INC. and is not to be used, in whole or in part, for any other project, without the written authorization of EDMONDSON DESIGN GROUP, INC..

CITY OF GROVE

CITY OFFICES

ARCHITECTURE & INTERIOR DESIGN
 Edmondson Design Group
 8283 South Harvard Avenue, Suite 224
 Tulsa, Oklahoma 74137
 T: 918.576.8700



No.	Description	Date
REV 2	ADDITION OF WINDOWS AND WALLS	10/9/23

OVERALL PLAN

CONSTRUCTION DOCUMENTS

PROJECT NO: 111-044-20
 SHEET: 18
 DATE: RC