

**ADDENDUM NO. 3
SANITARY SEWER IMPROVEMENTS
GROVE MUNICIPAL SERVICES AUTHORITY**

DECEMBER 12, 2023

This Addendum No. 3 is hereby made a part of the contract documents to the same extent as though it were originally included therein, and shall supersede anything contained in the plans and specifications with which it might conflict. **This Addendum shall be acknowledged on Page 1 of the Bid Form and stapled to the Bid Documents.**

This addendum consists of the following revisions to the CONTRACT DOCUMENTS FOR:
SANITARY SEWER IMPROVEMENTS

ITEM NO. 1 – BID OPENING DATE CHANGE

All bids are due to the Grove Municipal Services Authority by 10:00 a.m. on Thursday, December 21, 2023.

ITEM NO. 2 – NOTICE TO BIDDERS

Thermaform is an approved equal for Sliplining/CIPP

Trenchless Replacement: IPS HDPE is approved material for trenchless installation. For depths up to 10 feet, DR 17 is approved. For depths over 10', DR 11 is approved.

ITEM NO. 3 – REVISED BID PROPOSAL

Replace the bid proposal in its entirety with the attached Revised Bid Proposal dated December 12, 2023.

ITEM NO. 4 – CONSTRUCTION DRAWINGS

REFER TO ATTACHED DRAWING SHEET 3

The attached SUMMARY OF QUANTITIES sheet is provided for reference. This sheet shall be used to reflect changes to the SUMMARY OF QUANTITIES table, as well as the addition of Pay Note 10.

REFER TO ATTACHED DRAWING SHEET 5

The attached MANHOLE REHABILITATION SCHEDULE sheet is provided for reference. This sheet shall be used to reflect changes to the MANHOLE REHABILITATION SCHEDULE.

REFER TO ATTACHED DRAWING SHEET 39

The attached MISCELLANEOUS DETAILS sheet is provided for reference. This sheet shall be used to reflect the addition of details STREET UTILITY CROSSING and GRAVITY SEWER BEDDING.

All other provisions of the Contract Documents shall remain in full force and effect.

HOLLOWAY, UPDIKE AND BELLEN, INC.



Dale Seaton, P.E.
Principal



Enclosures:

- *Revised Bid Proposal Dated 12.12.2023*
- *Sheet 3*
- *Sheet 5*
- *Sheet 39*

END OF ADDENDUM NO. 3

REVISED BID PROPOSAL
PER ADDENDUM NO. 3
December 12, 2023

OWNER: Grove Municipal Services Authority
104 W 3rd Street
Grove, OK 74344

PROJECT: Sanitary Sewer Improvements

PROJECT NO.: 22GMSASANSEW

1. The undersigned Bidder proposes and agrees, if this Bid is accepted, to enter into an Agreement with OWNER in the form included in the Contract Documents to complete all Work as specified or indicated in the Contract Documents for the Contract Price and within the Contract Time indicated in this Bid and in accordance with the Contract Documents.
2. BIDDER accepts all of the terms and conditions of the Information for Bidders, including without limitation those dealing with the disposition of Bid Security. Bids shall be held for 60 days after the day of Bid opening. BIDDER shall sign the Agreement and submit the Contract Security and other documents required by the Contract Documents within fifteen days after the date of OWNER'S Notice of Award.
3. In submitting this Bid, the BIDDER represents, as more fully set forth in the Agreement, that:
 - (a) BIDDER has examined copies of all the Contract Documents and Bidding Documents and of the following addenda:

Date	Number
------	--------

(receipt of all of which is hereby acknowledged) and also copies of the Advertisement and the Information for Bidders;

- (b) BIDDER has examined the site and locality where the Work is to be performed, the legal requirements (federal, state and local laws, ordinances, rules and regulations) and the conditions affecting cost, progress or performance of the Work and has made such independent investigations as BIDDER deems necessary.
- (c) BIDDER has not directly or indirectly induced or solicited any other Bidder to submit a false or sham Bid; BIDDER has not solicited or induced any person, firm or a corporation to refrain from bidding; and BIDDER has not sought by collusion to obtain for himself any advantage over any other Bidder or over OWNER.

4. In submitting this Bid, BIDDER represents that:

- (a) The total bid for the Bid Schedule includes all work necessary to complete that portion of the project described in the Bid Schedule and represents the entire scope of work covered by the Contract Documents. If a particular item of work is not specifically separated as a bid item the cost therefore is to be considered included in the bid item most nearly related.
- (b) The total bid for each Bid Schedule is based on the quantities shown on the Bid Form and on the dimensions shown on the drawings where specific quantities are not itemized. The Contract Amount will be adjusted for bid schedule items with unit prices according to the actual quantities and measurement of the finished construction as determined by the Engineer.
- (c) BIDDER will complete the work for the following price(s):

For the Design and Construction of all the work necessary to complete the work under Bid Schedule, as defined in the Contract Documents.

BID SCHEDULE				
SANITARY SEWER IMPROVEMENTS				
<u>Item No.</u>	<u>Qty. & Unit</u>	<u>Description</u>	<u>Unit Cost</u>	<u>Total Cost</u>
1.	1 EA	Obstruction Removal _____	\$ _____	\$ _____
		Dollars – per each		
2.	3,097 LF	8” Slipline, SDR 26/Cured-In-Place-Pipe _____	\$ _____	\$ _____
		Dollars – per linear foot		
3.	1,659 LF	Open Cut or Trenchless 6” _____	\$ _____	\$ _____
		Dollars – per linear foot		
4.	2,141 LF	Open Cut or Trenchless 8” _____	\$ _____	\$ _____
		Dollars – per linear foot		

**BID SCHEDULE
SANITARY SEWER IMPROVEMENTS**

<u>Item No.</u>	<u>Qty. & Unit</u>	<u>Description</u>	<u>Unit Cost</u>	<u>Total Cost</u>
5.	105 EA	Service Connections _____ Dollars – per each	\$ _____	\$ _____
6.	4 EA	Point Repair 6” _____ Dollars – per each	\$ _____	\$ _____
7.	14 EA	Point Repair 8” _____ Dollars – per each	\$ _____	\$ _____
8.	5 LF	Additional Footage 6” _____ Dollars – per linear foot	\$ _____	\$ _____
9.	20 LF	Additional Footage 8” _____ Dollars – per linear foot	\$ _____	\$ _____
10.	1,335 SY	Sodding _____ Dollars – per square yard	\$ _____	\$ _____
11.	10,270 LF	Video Pre-Inspection _____ Dollars – per linear foot	\$ _____	\$ _____
12.	1 EA	Mobilization _____ Dollars – per each	\$ _____	\$ _____

**BID SCHEDULE
SANITARY SEWER IMPROVEMENTS**

<u>Item No.</u>	<u>Qty. & Unit</u>	<u>Description</u>	<u>Unit Cost</u>	<u>Total Cost</u>
13.	1 EA	Photographic Documentation _____ Dollars – per each	\$ _____	\$ _____
14.	1 LS	Owners Allowance <u>One Hundred Thousand Dollars and NO/100</u> Dollars – per lump sum	\$ <u>100,000.00</u>	\$ <u>100,000.00</u>
15.	2,734 SY	Restoration _____ Dollars – per square yard	\$ _____	\$ _____
16.	40 EA	Replace Cover, Frame and Frame Seal (Type A) _____ Dollars – per each	\$ _____	\$ _____
17.	1 EA	Replace Frame Seal (Type B) _____ Dollars – per each	\$ _____	\$ _____
18.	8 EA	Corrosion & Infiltration Protection Rehabilitation (4’) _____ Dollars – per each	\$ _____	\$ _____
19.	3 EA	Corrosion & Infiltration Protection Rehabilitation (5’) _____ Dollars – per each	\$ _____	\$ _____
20.	4 EA	Corrosion & Infiltration Protection Rehabilitation (6’) _____ Dollars – per each	\$ _____	\$ _____

**BID SCHEDULE
SANITARY SEWER IMPROVEMENTS**

<u>Item No.</u>	<u>Qty. & Unit</u>	<u>Description</u>	<u>Unit Cost</u>	<u>Total Cost</u>
21.	14 EA	Corrosion & Infiltration Protection Rehabilitation (Extra Depth) _____ Dollars – per each	\$ _____	\$ _____
22.	9 EA	Manhole Replacement (4’ Diameter) _____ Dollars – per each	\$ _____	\$ _____
23.	5 EA	Lamphole Replacement _____ Dollars – per each	\$ _____	\$ _____
24.	1 EA	Lamphole Frame and Cover Replacement _____ Dollars – per each	\$ _____	\$ _____
25.	8 VF	Additional Depth Over 6’ _____ Dollars – per vertical foot	\$ _____	\$ _____

TOTAL BASE BID – SANITARY SEWER IMPROVEMENTS

_____ DOLLARS (\$ _____)
(in words) (in figures)

5. BIDDER agrees that the Work will be substantially completed within 240 consecutive calendar days after the date when the Contract Time commences to run.

BIDDER accepts the Liquidated damages will be \$1,000.00 per calendar day.

6. The following documents are attached to and made a condition of this Bid:

A. Required Bid Security in the form of (Bid Bond) (Certified Check). Each BID must be accompanied by a bid bond payable to the OWNER for five percent of the total amount

of the bid. A certified check may be used in lieu of the bid bond. No bid security is required if bid is \$7,500.00 or less. As soon as the bid prices have been compared, the OWNER will return the BONDS of all except the three lowest responsible BIDDERS. The bid bond of the successful bidder will be retained until Performance Bond, Statutory Bond, Maintenance Bond, and Certificate of Insurance have been executed and approved, after which it will be returned. The bid security of the two remaining unsuccessful Bidders will be returned after the successful bidder has entered into a contract and has furnished the required bonds and insurance.

- B. A tabulation of Subcontractors and other persons and organizations required to be identified in the bid.
 - C. Contractor's Pre-Qualification Statement with supporting data.
 - D. Project Superintendent and Supervision Roster.
7. The terms used in this Bid which are defined in the General Conditions of the Construction Contract are included as part of the Contract Documents and have the meaning assigned to them in the General Conditions.
8. Communications from Owner to Bidder will be sent to the address below.

THE BIDDER SHALL COMPLETE THE FOLLOWING AS APPLICABLE:

AN INDIVIDUAL

By _____ (Individual's Name)
doing business as _____

A PARTNERSHIP

By _____ (Firm Name)

CORPORATION

By _____ (Corporation Name)

State of Incorporation is _____

By _____
(Name)

Attest: Secretary

(Title)

(Corporate Seal)

Business address: _____

Phone No. _____ Fax No. _____

SUBMITTED on _____, 20____.

SUMMARY OF SEWER REHABILITATION SCHEDULE					
ITEM NO.	DESCRIPTION	UNIT	PAY ITEM NOTE	EXTRA	TOTAL
1	OBSTRUCTION REMOVAL	EA	1		1
2	8" SLIPLINE, SDR 26 / CURED-IN-PLACE-PIPE	LF	1		3097
3	OPEN CUT OR TRENCHLESS 6"	LF	1,6		1659
4	OPEN CUT OR TRENCHLESS 8"	LF	1,6		2141
5	SERVICE CONNECTIONS	EA	1,3,5		105
6	POINT REPAIR 6"	EA			4
7	POINT REPAIR 8"	EA			14
8	ADDITIONAL FOOTAGE 6"	LF			5
9	ADDITIONAL FOOTAGE 8"	LF			20
10	SODDING	SY	1,4		1335
11	VIDEO PRE-INSPECTION	LF			10270
12	MOBILIZATION	EA			1
13	PHOTOGRAPHIC DOCUMENTATION	EA			1
14	OWNER'S ALLOWANCE	ALLOW			1
15	RESTORATION	SY	2,4,8,9		2734
16	REPLACE COVER, FRAME AND FRAME SEAL (TYPE A)	EA	1		40
17	REPLACE FRAME SEAL (TYPE B)	EA	1		1
18	CORROSION & INFILTRATION PROTECTION REHABILITATION (4')	EA	1,10		8
19	CORROSION & INFILTRATION PROTECTION REHABILITATION (5')	EA	1,10		3
20	CORROSION & INFILTRATION PROTECTION REHABILITATION (6')	EA	1,10		4
21	CORROSION & INFILTRATION PROTECTION REHABILITATION (EXTRA DEPTH)	VF	1,10		14
22	MANHOLE REPLACEMENT (4' DIAMETER)	EA	1		9
23	LAMPHOLE REPLACEMENT	EA	1		5
24	LAMPHOLE FRAME AND COVER REPLACEMENT	EA	1		1
25	ADDITIONAL DEPTH OVER 6'	VF	1		8

PAY ITEM NOTES:

- QUANTITIES UNDER THE "EXTRA" COLUMN HEADING ARE NOT ASSOCIATED WITH ANY SPECIFIC REPAIR SHOWN ON THE PLANS AND WILL ONLY BE USED TO COMPENSATE THE CONTRACTOR FOR ADDITIONAL COSTS INCURRED DUE TO CHANGED FIELD CONDITIONS.
- ALL COSTS ASSOCIATED WITH STREET, DRIVEWAY, SIDEWALK OR OTHER SURFACE REPAIRS SHALL BE INCLUDED IN RESTORATION.
- QUANTITY INCLUDES REQUIRED SURFACE RESTORATION FOR PLACING SERVICE LINES IN STREET R/W. SEE NOTE PAY ITEM NOTE 6 FOR SERVICE LOCATIONS.
- ALL DISTURBED AREAS SHALL BE SODDED TO INCLUDE COST OF SOD IN RESTORATION.
- SCH. 40 PVC FOR BOTH 4" AND 6" SERVICE LINES.
- CONTRACTOR SHALL ENSURE ALL POLES WHICH ARE AFFECTED BY TRENCHING CONDITIONS ARE BRACED. NO ADDITIONAL PAYMENT SHALL BE MADE.
- CONTRACTOR SHALL REPAIR ANY IRRIGATION SYSTEMS, ROOF DRAINS, AND FENCING DAMAGED IN THE ZONE OF CONSTRUCTION DURING THE COURSE OF CONSTRUCTION TO SATISFACTION OF THE PROPERTY OWNER. PAYMENT SHALL BE INCLUDED IN "RESTORATION".
- COST OF ANY TEMPORARY FENCING AND POLES SHALL BE INCLUDED IN COST OF "RESTORATION". NO ADDITIONAL PAYMENT SHALL BE MADE.
- CONTRACTOR SHALL COORDINATE WITH HOMEOWNERS TO RESET ALL PAVER, LANDSCAPING, PRIVATE SIDEWALKS AND FENCES THAT ARE DISTURBED DURING CONSTRUCTION OPERATIONS. ALL MATERIALS, LABOR, AND EQUIPMENT REQUIRED FOR RESETING OR REPLACING SUCH ITEMS IS TO BE INCLUDED IN PRICE BID FOR "RESTORATION".
- SHALL INCLUDE ALL COSTS TO REHAB EXISTING 4' MHS PER SPEC. 9960. EXTRA DEPTH SHALL BE FOR MANHOLES OVER 6' DEPTH.

REHABILITATION METHODS:

TYPE A
REPLACEMENT OF MANHOLE COVER, FRAME AND FRAME SEAL

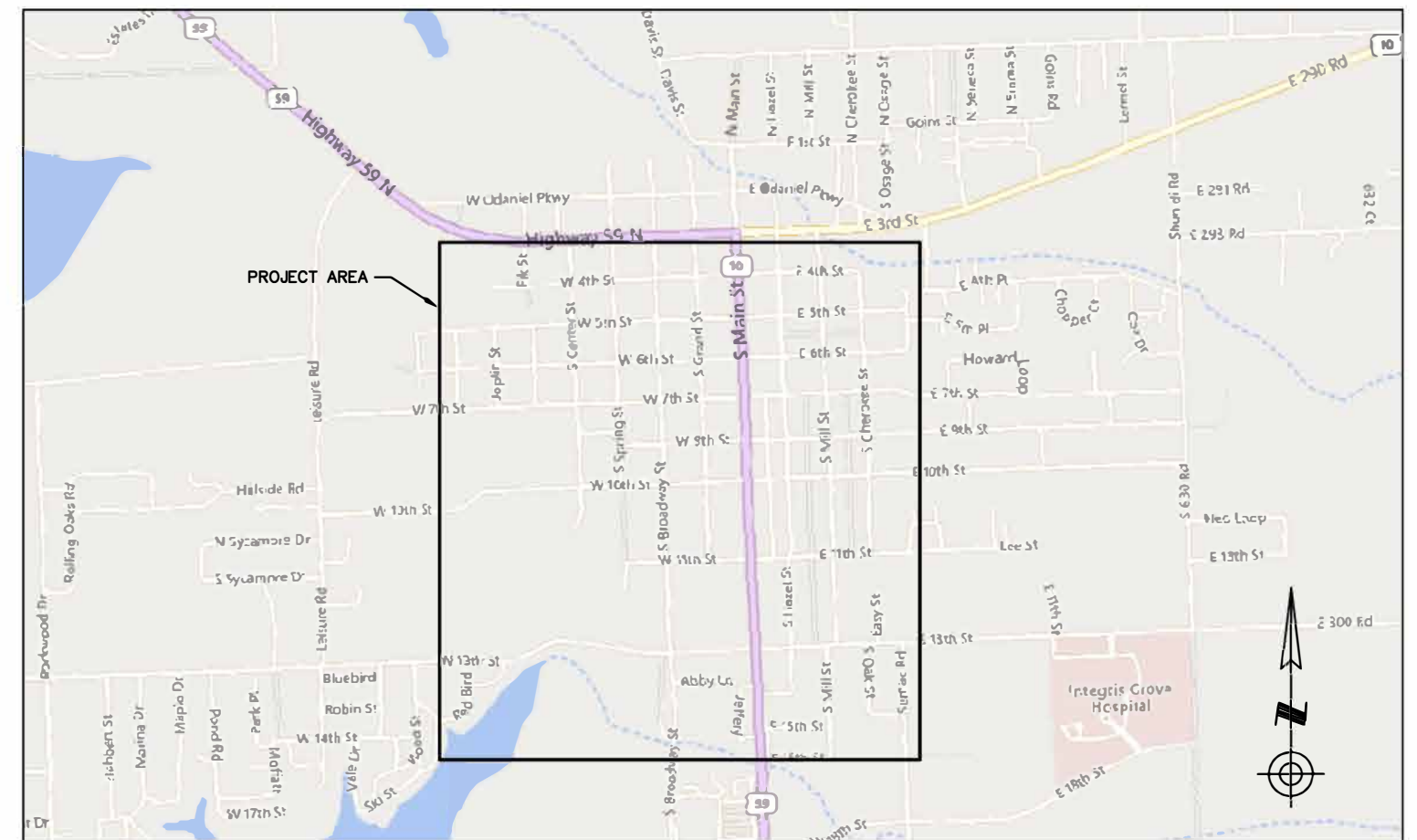
TYPE B
REPLACEMENT OF MANHOLE FRAME SEAL

CORROSION & INFILTRATION PROTECTION REHAB.

MANHOLE REPLACEMENT
COMPLETE MANHOLE REPLACEMENT

MANHOLE REPLACEMENT
ADDITIONAL FOOTAGE

LAMPHOLE REPLACEMENT
LAMPHOLE REPLACEMENT

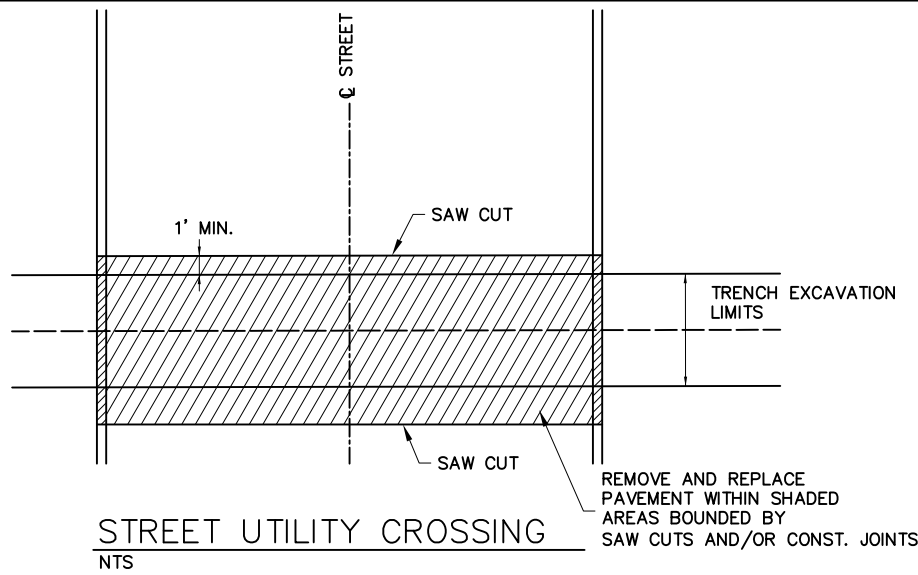


1 LOCATION MAP
3 NTS

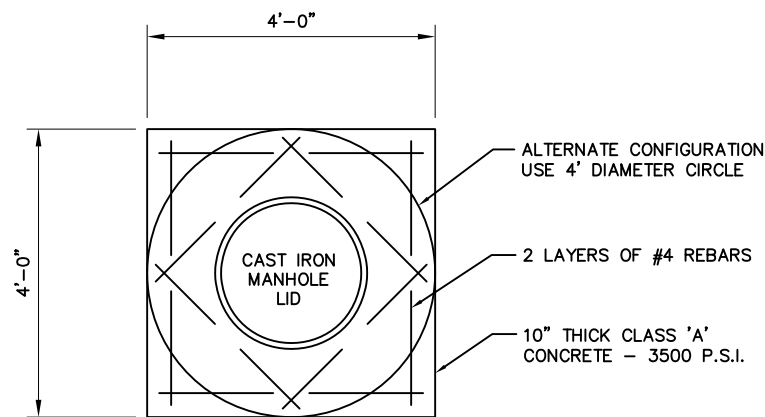
MANHOLE REHABILITATION SCHEDULE

Manhole Information										Repair Method							
Repair	FormID	MH	Diameter (Ft)	Depth (Ft)	Grade to Rim	Address	H2S Level Reading	Inspection Status	Surface Type	Field Recommendation	TYPE A	TYPE B	Corrosion & Infiltration Protection Rehab	Manhole Replacement (4' Dia.)	Additional Depth Over 6' (VF)	Lamphole Replacement	Lamphole Cover and Frame
Rehab	15371	MH0055	4	4.43	1.11	408 S Osage St	0	Remote Inspection - Level 2	Grass/Dirt	Replace MH Cover	1						
Rehab	15461	MH0056	4	3.25	0	502 S Osage St	0	Remote Inspection - Level 2	Grass/Dirt	Replace MH Cover, Grouted Pipe Seal	1		1				
Replacement	15455	MH0057	4	4.68	0	369 E 6th St	0	Remote Inspection - Level 2	Grass/Dirt	Complete Manhole Replacement - Switched due to 80% of total cost				1			
Rehab	15389	MH0091	4	7.23	0	417 S Hazel St	0	Remote Inspection - Level 2	Asphalt	Plug Lift Holes, Replace Bench and Trough			1				
Rehab	15380	MH0120	4	3.78	0	56 E 5th St	0	Remote Inspection - Level 2	Asphalt	Replace MH Cover, Rehabilitate Wall	1		1				
Rehab	15443	MH0121	4	5.84	0	501 S Main St	0	Remote Inspection - Level 2	Asphalt	Grouted Pipe Seal, Rehabilitate Bench and Trough			1				
Rehab	15386	MH0122	4	5.35	0	550 S Hazel St	0	Remote Inspection - Level 2	Asphalt	Replace MH Cover, Rehabilitate Bench and Trough	1		1				
Rehab	15452	MH0123	4	5.30	0	611 S Hazel St	0	Remote Inspection - Level 2	Asphalt	Replace MH Cover	1						
Rehab	15536	MH0125	4	3.25	0	709 S Hazel St	0	Remote Inspection - Level 2	Grass/Dirt	Replace MH Cover	1						
Rehab	15515	MH0127	4	3.42	0	1021 S Hazel St	0	Remote Inspection - Level 2	Gravel	Replace MH Cover, Replace MH Frame Seal	1						
Rehab	15512	MH0128	4	3.85	0	112 E 11th St	0	Remote Inspection - Level 2	Gravel	Replace MH Cover	1						
Replacement	15401	MH0131	4	6.65	0	1318 S Mill St	0	Remote Inspection - Level 2	Grass/Dirt	Complete Manhole Replacement - Switched due to 80% of total cost				1	0.7		
Rehab	15398	MH0132	4	4.9	0	1319 S Mill St	0	Remote Inspection - Level 2	Grass/Dirt	Replace MH Cover, Grouted Pipe Seal, Rehabilitate Bench and Trough	1		1				
Replacement	15404	MH0133	4	8.99	0	1311 S Mill St	0	Remote Inspection - Level 2	Grass/Dirt	Complete Manhole Replacement - Switched due to 80% of total cost				1	3.0		
Rehab	16334	MH0134	4	3.74	0	1310 S Oak St	0	Remote Inspection - Level 2	Grass/Dirt	Replace MH Cover	1						
Rehab	15476	MH0135	4	6.9	0	1117 S Mill St	0	Remote Inspection - Level 2	Grass/Dirt	Replace MH Cover, Grouted Pipe Seal, Rehabilitate Bench and Trough	1		1				
Rehab	15383	MH0137	4	3.65	.05	510 S Cherokee St	0	Remote Inspection - Level 2	Grass/Dirt	Replace MH Cover	1						
Rehab	15368	MH0138	4	4.51	0	200 E 4th St	0	Remote Inspection - Level 2	Grass/Dirt	Replace MH Cover	1						
Rehab	15539	MH0141	4	3.25	0	701 S Mill St	0	Remote Inspection - Level 2	Asphalt	Replace MH Cover	1						
Rehab	15545	MH0142	4	2.34	0.25	220 E 9th St	0	Remote Inspection - Level 2	Grass/Dirt	Replace MH Cover, Rehabilitate Wall	1		1				
Rehab	15626	MH0144	4	3.76	0	1013 S Mill St	0	Remote Inspection - Level 2	Gravel	Replace Bench and Trough			1				
Replacement	15521	LH0145	1	2.72	0	212 E 11th St	0	Remote Inspection - Level 2	Concrete Pavement	Lamphole Replacement						1	
Rehab	15572	MH0158	4	2.8	0	62 W 11th St	0	Remote Inspection - Level 2	Grass/Dirt	Grouted Pipe Seal			1				
Rehab	15575	MH0159	4	4	0	1022 S Main St	0	Remote Inspection - Level 2	Concrete Pavement	Rehabilitate Wall, Bench and Channel Rehabilitation			1				
Rehab	15365	MH0166	4	3.55	0	1409 S Acorn St	0	Remote Inspection - Level 2	Grass/Dirt	Replace MH Cover	1						
Rehab	15362	MH0167	4	5.1	0	1492 S Acorn St	0	Remote Inspection - Level 2	Asphalt	Replace MH Cover	1						
Rehab	15356	MH0168	4	4.75	0	1498 S Acorn St	0	Remote Inspection - Level 2	Grass/Dirt	Replace MH Cover	1						
Rehab	15353	MH0169	4	4.31	0	1548 S Acorn St	0	Remote Inspection - Level 2	Grass/Dirt	Replace MH Cover	1						
Rehab	15359	MH0170	4	14.8	3	1590 S Acorn St	0	Remote Inspection - Level 2	Grass/Dirt	Replace MH Cover, Seal Precast Joints	1		1				
Replacement	15467	MH0171	4	9.15	0	1500 S Main St	0	Remote Inspection - Level 2	Gravel	Complete Manhole Replacement and Protect from H2S - Switched due to 80% of total cost				1	3.2		
Rehab	15497	MH0192	4	3.7	0	151 W 6th St	0	Remote Inspection - Level 2	Asphalt	Replace MH Cover	1						
Rehab	15425	MH0196	4	3.92	0	603 S Spring St	0	Remote Inspection - Level 2	Gravel	Replace MH Cover, Replace MH Frame Seal	1						
Replacement	15428	MH0197	4	6.18	0	620 S Broadway St	0	Remote Inspection - Level 2	Concrete Collar	Complete Manhole Replacement - Switched due to 80% of total cost				1	0.2		
Rehab	15437	MH0198	4	3.53	0	723 S Spring St	0	Remote Inspection - Level 2	Concrete Collar	Replace MH Cover	1						
Rehab	15485	MH0199	4	3.28	0	215 W 10th St	0	Remote Inspection - Level 2	Concrete Collar	Replace MH Cover	1						
Replacement	15347	MH0201	4	5.8	0	301 W 10th St	0	Remote Inspection - Level 2	Asphalt	Complete Manhole Replacement - Switched due to 80% of total cost				1			
Rehab	16322	MH0201A	4	3.55	0	301 W 10th St	0	Remote Inspection - Level 2	Grass/Dirt	Replace MH Cover, Replace MH Frame, Replace MH Frame Seal	1						
Rehab	15560	MH0202	4	4.74	0	338 W 8th St	0	Remote Inspection - Level 2	Gravel	Replace MH Cover	1						
No Rehab	15350	MH0203	4	8.02	0	736 S Spring St	0	Remote Inspection - Level 2	Asphalt	None							
Rehab	15434	MH0204	4	6.25	0	696 S Spring St	0	Remote Inspection - Level 2	Asphalt	Replace MH Cover	1						
Rehab	15227	MH0206	4	6.75	0	507 S Spring St	0	Remote Inspection - Level 2	Asphalt	Rehabilitate Wall			1				
Replacement	15224	MH0207	4	6.55	0	316 W 5th St	0	Remote Inspection - Level 2	Gravel	Complete Manhole Replacement - Switched due to 80% of total cost				1	0.6		
Rehab	15554	MH0208	4	4.7	0	602 S Spring St	0	Remote Inspection - Level 2	Gravel	Replace MH Cover	1						
Replacement	15557	MH0208A	1	3.65	0	701 S Center St	0	Remote Inspection - Level 2	Concrete Collar	Lamphole Replacement						1	
Rehab	15155	MH0213	4	4.85	0	346 S Center St	0	Remote Inspection - Level 2	Grass/Dirt	Replace MH Cover, Grouted Pipe Seal, Rehabilitate Bench and Trough	1		1				
Rehab	15158	MH0214	4	3.7	0	346 S Center St	0	Remote Inspection - Level 2	Concrete Pavement	Replace MH Cover, Grouted Pipe Seal, Rehabilitate Bench and Trough	1		1				
Rehab	15164	MH0215	4	3.25	0	410 W 3rd St	0	Remote Inspection - Level 2	Asphalt	Replace MH Cover	1						
Rehab	15167	MH0216	4	3.94	0.34	449 W 4th St	0	Remote Inspection - Level 2	Grass/Dirt	Replace MH Cover, Grouted Pipe Seal	1		1				
Rehab	15176	MH0217	4	5.45	0	461 Elk St	0	Remote Inspection - Level 2	Gravel	Replace MH Cover, Rehabilitate Bench and Trough	1		1				
Rehab	14990	MH0218	4	5.88	0	248 S Center St	0	Remote Inspection - Level 2	Asphalt	Replace MH Cover, Grouted Pipe Seal	1		1				
Rehab	15257	MH0228	4	5.5	1.15	508 W 5th St	0	Remote Inspection - Level 2	Grass/Dirt	Replace MH Cover, Replace MH Frame, Replace MH Frame Seal	1						
Rehab	15275	MH0229	4	5	0.96	552 W 7th St	0	Remote Inspection - Level 2	Grass/Dirt	Replace MH Cover	1						
Rehab	15341	MH0233	4	5.52	0	451 W 10th St	0	Remote Inspection - Level 2	Grass/Dirt	Replace MH Cover	1						
Rehab	15260	MH0241	4	7.1	0	548 Joplin St	0	Remote Inspection - Level 2	Asphalt	Replace MH Cover, Grouted Pipe Seal	1		1				
Rehab	15494	MH0249	4	5.78	0	250 W 11th St	0	Remote Inspection - Level 2	Grass/Dirt	Complete Manhole Replacement - Switched due to 80% of total cost				1			
Rehab	16328	LH0249A	1	4.45	0	1010 S Broadway St	0	Remote Inspection - Level 2	Concrete Collar	Replace MH Cover	1						
Replacement	15377	LH0258	1	3.24	0	107 E 6th St	0	Remote Inspection - Level 2	Grass/Dirt	Lamphole Replacement						1	
Rehab	15458	MH0278	4	4.30	0	606 S Mill St	0	Remote Inspection - Level 2	Grass/Dirt	Replace MH Cover, Grouted Pipe Seal, Rehabilitate Bench and Trough	1		1				

Z:\Projects\2022\22GMSASANSEW\Design\Production\Plans\Rehab_Schedules.dwg, 12/11/2023 2:40:50 PM

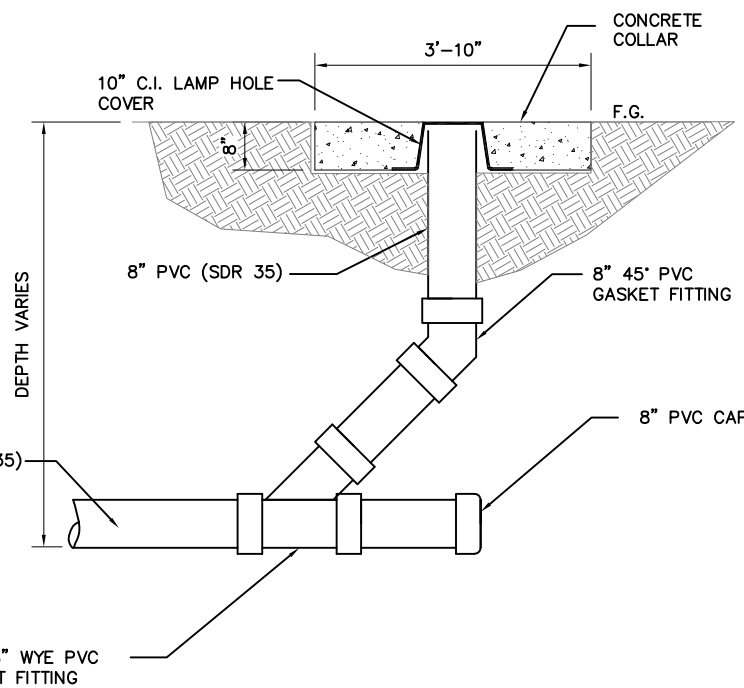


STREET UTILITY CROSSING
NTS



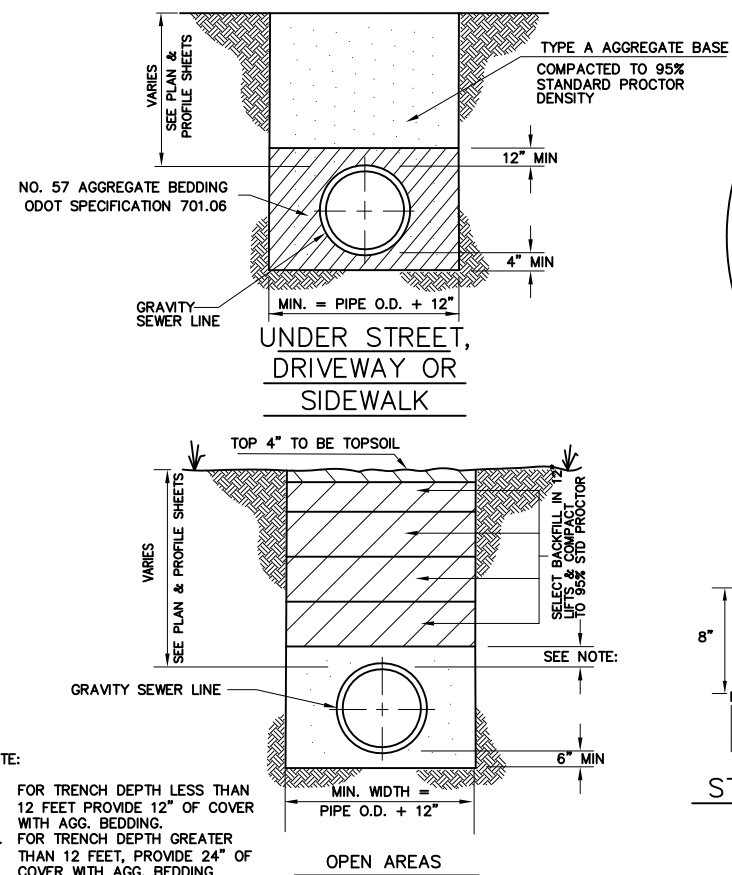
CONCRETE MANHOLE COLLAR DETAIL

SCALE: 3/4" = 1'-0"

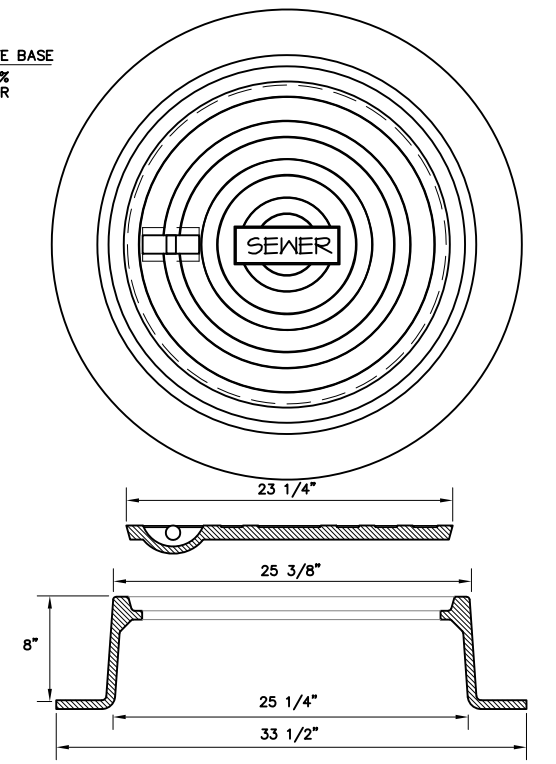


SANITARY SEWER CLEAN-OUT ASSEMBLY

SCALE: 3/4" = 1'-0"



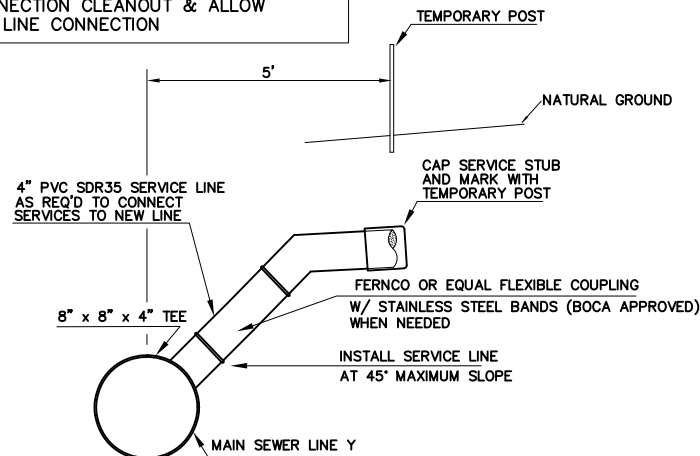
GRAVITY SEWER BEDDING DETAIL



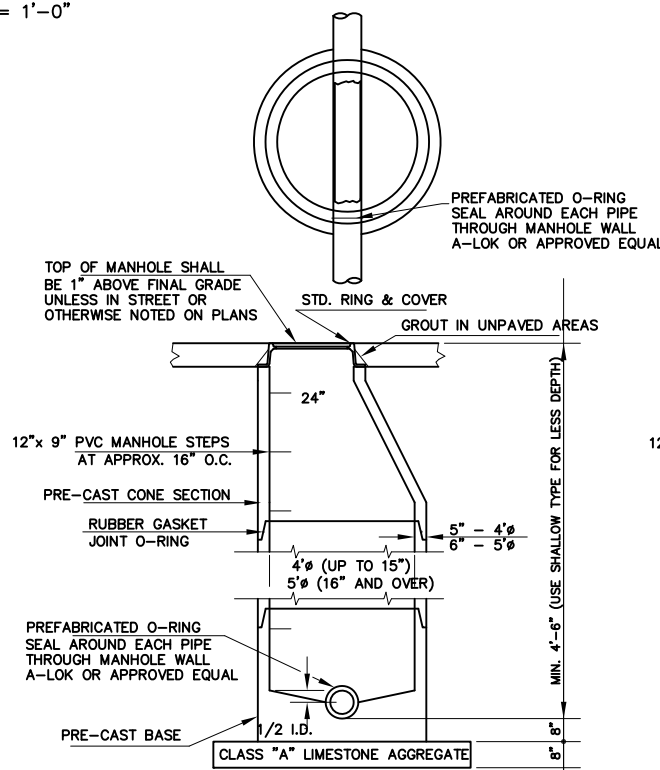
STANDARD MANHOLE FRAME & COVER
NEENAH R-1797

(W/2" LETTERING AS NOTED).

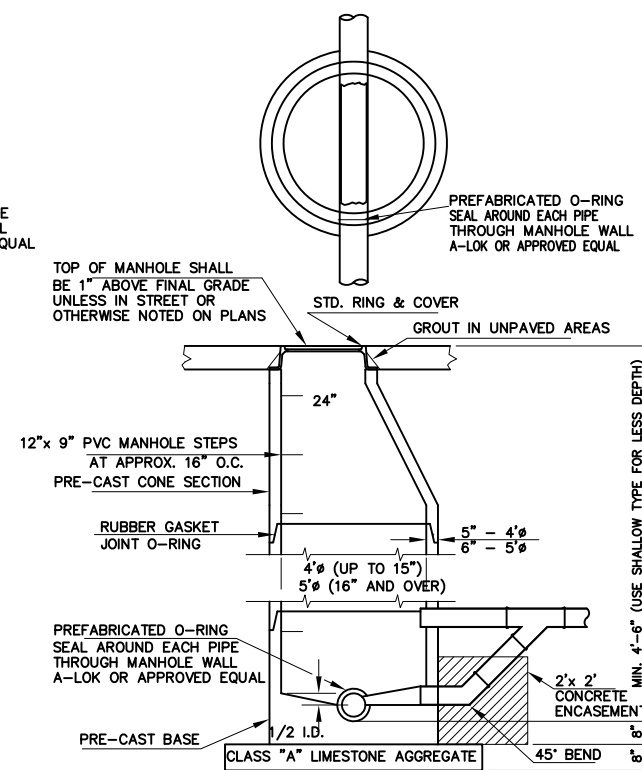
NOTE: CHECK HOUSE CONNECTION CLEANOUT & ALLOW 2.0% DROP TO MAIN LINE CONNECTION



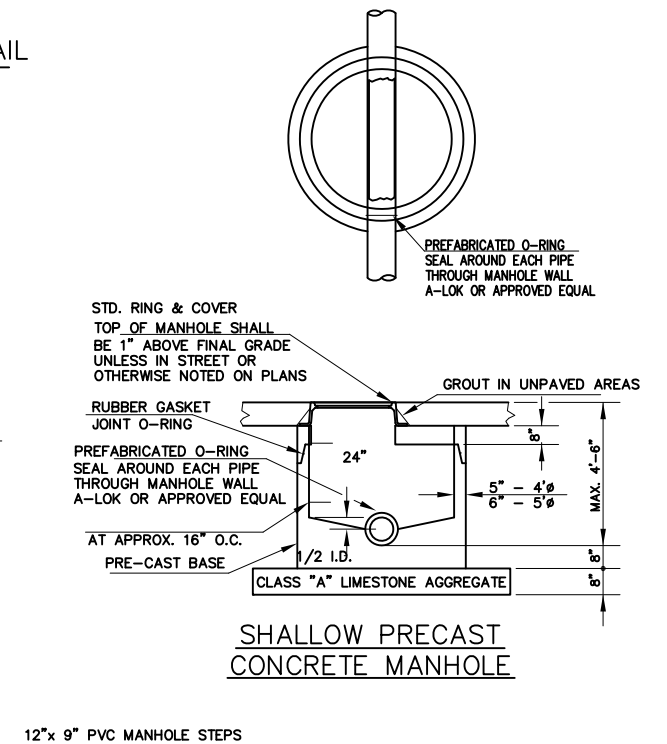
SERVICE LINE CONNECTION DETAILS



STANDARD PRECAST CONCRETE MANHOLE



STANDARD PRECAST CONCRETE DROP MANHOLE
(WHEN DROP IS 2'-0" OR MORE)



SHALLOW PRECAST CONCRETE MANHOLE

Z:\Projects\2022\22GMASANSEW\Design\Misc\Details.dwg, 12/11/2023 2:45:41 PM